



ASX ANNOUNCEMENT
18 June 2026

REDSTONE ACQUIRES SUITE OF HIGHLY PROSPECTIVE GOLD AND CRITICAL MINERAL EXPLORATION PROJECTS IN WA

*Value-Accretive Acquisition Enhances Exposure to Gold, Copper, Lithium and
Base Metals in Western Australia*

HIGHLIGHTS

- Redstone to acquire a 100% interest in a portfolio of highly prospective Greenfields exploration projects located in Western Australia (*the Acquired Projects*)
- Acquired Projects offer exposure to multiple high-demand commodities, including gold, lithium, copper, and Mt Isa-style copper-gold and base metal systems, providing a low-cost, capital-efficient opportunity to accelerate exploration and unlock shareholder value (see Figure 1)
- Acquisition represents a deliberate portfolio expansion strategy focused on securing highly prospective ground predominantly within active exploration corridors and proximal to mining infrastructure
- Several projects and targets have been prioritised by Redstone for immediate evaluation and exploration; including :
 - *Mt Cauden Gold and Lithium Project: proximal to the world class Marvel Loch gold operation and Mt Holland Lithium mine in the well-established Southern Cross gold district, adjacent to multiple and significant gold discoveries (see Figure 2)*
 - *The proximal Marvel Loch gold project and surrounding Southern Cross area is a world class gold producing district - Marvel Loch gold mill production stands at more than 10m Oz of gold from local mines*
 - *The world class Mt Holland Li Mine – 189 Mt at 1.5% LiO₂ – is one of Australia’s largest and highest-grade hard rock Li resources and is located within the same greenstone belt, only 25km along strike to the SE of the Mt Cauden Project;*



- **Twin Hills Gold Project: proximal to the well-renowned Menzies gold district within the Eastern Goldfields Norseman-Wiluna greenstone terrane (see Figure 3) - historical drilling (1998) identified significant thick gold intersections of up to 17m @ 1.23 g/t Au from only 28m downhole¹;**
- **Rudall East Mt Isa style Cu-Au and Base Metals Project: south of Karlamilyi National Park in the Paterson terrane, East Pilbara (see Figure 4); historical surface samples recovered oxidized mineralisation with up to 22.9% Cu and 661 g/t Ag²**
- **Cockatoo Rocks LCT Pegmatite Project: only 100km NE of Kalgoorlie positioned on the Jubilee and Gindalbie faulted terrane boundary (see Figure 5); pegmatite logged at the base of most historical drill holes³**
- **Importantly, Program of Work (PoW) approvals have already been secured for the Mt Cauden and the Twin Hills projects which have several identified walk-up drill targets for expedient exploration**
- **Limited exploration over the past two decades on the Acquired Projects provides an opportunity for Redstone to unlock additional value through the application of modern exploration methods and targeting techniques**
- **Value-Accretive Acquisition Structure: 75 million fully paid ordinary shares to the Vendor, Hurricane Prospecting Pty Ltd (Hurricane), at a deemed issue price of \$0.003 per share and in voluntary escrow for 12 months. Consideration also includes a 1.5% NSR over all the Acquired Projects.**

Redstone Resources Limited (ASX Code: RDS) ('Redstone' or the 'Company') is pleased to announce that it has entered into an exclusive agreement to acquire a 100% interest in a suite of highly prospective gold, lithium, copper and base metals exploration projects located in Western Australia.

This strategic tenement portfolio⁴ provides Redstone with exposure to several compelling exploration targets - **many of which have had limited exploration work yet are located nearby to world-class discoveries and deposits** - presenting a significant opportunity for Redstone to apply renewed focus and modern exploration techniques to unlock potential value and exploration success in a Tier 1 jurisdiction.

COMMENTING ON THE STRATEGIC ACQUISITION, CHAIRMAN RICHARD HOMSANY SAID:

"This acquisition provides Redstone with a compelling opportunity to accelerate exploration activities across established and highly prospective mineral districts in Western Australia, leveraging existing infrastructure, accessibility and proven mineral endowment in a capital-efficient manner"

¹ 1998 RAB drilling in Hewlett, 1999, Annual Technical Report, WAMEX A58153

² Rust, 2016, Annual Technical Report, WAMEX A109169

³ Shirtliff, 2024 Annual Technical Reports, WAMEX A143277, A143278

⁴ See Appendix 1 Tenement Schedule of Acquired Projects



Importantly, the acquisition involves no cash consideration, enabling Redstone to rapidly commence drilling and other priority exploration activities at the highly prospective Mt Cauden and Twin Hills project areas, while the technical team undertakes a comprehensive assessment of the broader portfolio.

The decision to expand our exploration footprint in Western Australia aligns with our strategic focus on copper exploration at the Tollu Copper Deposit in the West Musgrave region. We look forward to advancing our assessment of these highly prospective assets and providing shareholders with further updates on our exploration plans in the near term.”

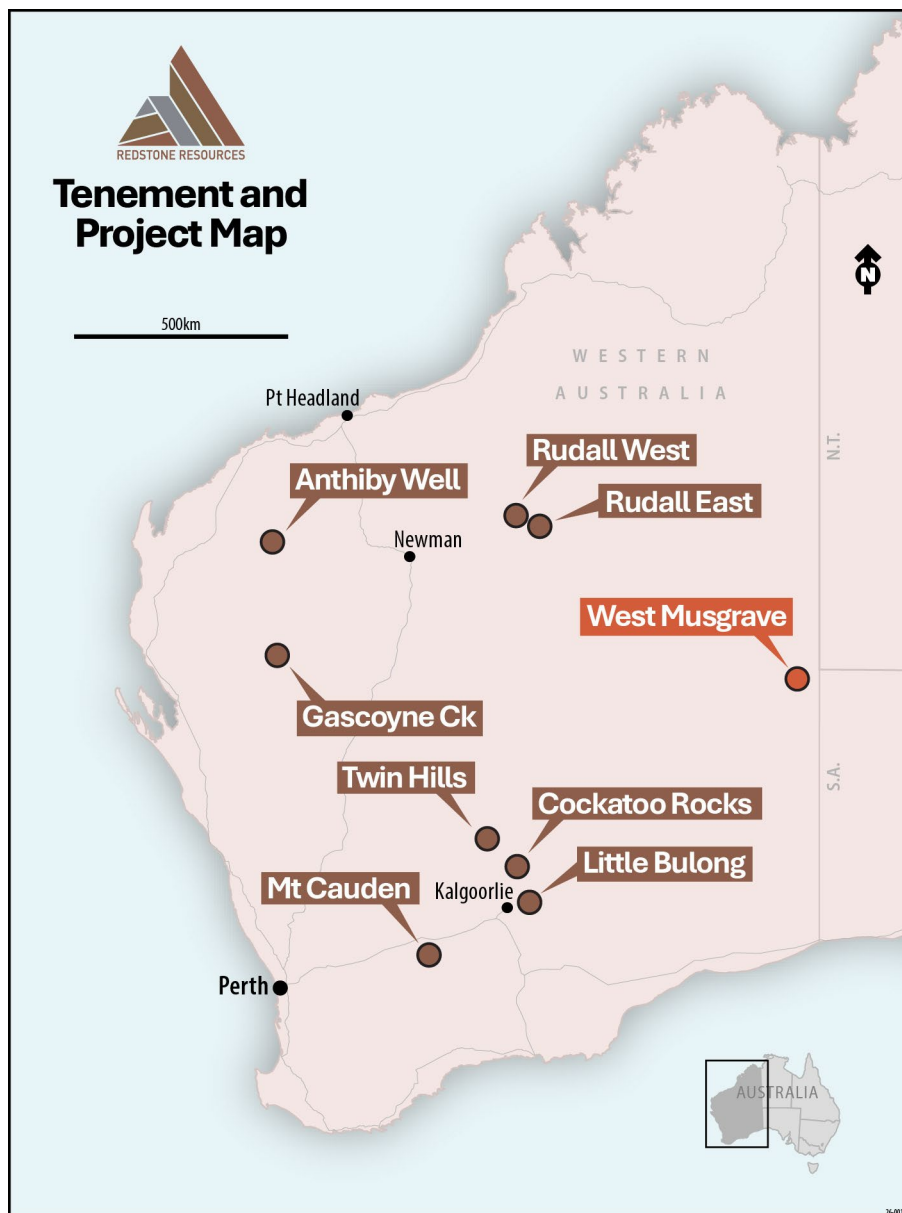


Figure 1 – Location map of newly Acquired Projects, all located in Tier-1 operating jurisdictions and Redstone’s flagship West Musgrave Project.



SUMMARY OF ACQUIRED PROJECTS

Mt Cauden Project – Gold and Lithium, Southern Cross Gold District, WA

The Mt Cauden Gold Project comprises over 40 km² of under-explored ground in the proven gold (Au) and lithium (Li) Youanmi Greenstone Belt, directly southeast of the **Marvel Loch gold plant and north of the Mt Holland Lithium mine in the well-established Southern Cross gold district (see Figure 2).**

The Project is adjacent to a string of well-known and productive Au deposits stretching for tens of kilometres north and south, all feeding the Marvel Loch gold mill (11km to the north), including the Marvel Loch, Yilgarn Star, Mary Lena, Hercules, Achilles, Nevorla, Cornishman, Treasury and the GVG cluster open pits and the Marvel Loch, Golden Pig, Transvaal, and Ruapehu underground operations. Marvel Loch has produced well over 10M oz of gold in its lifetime.

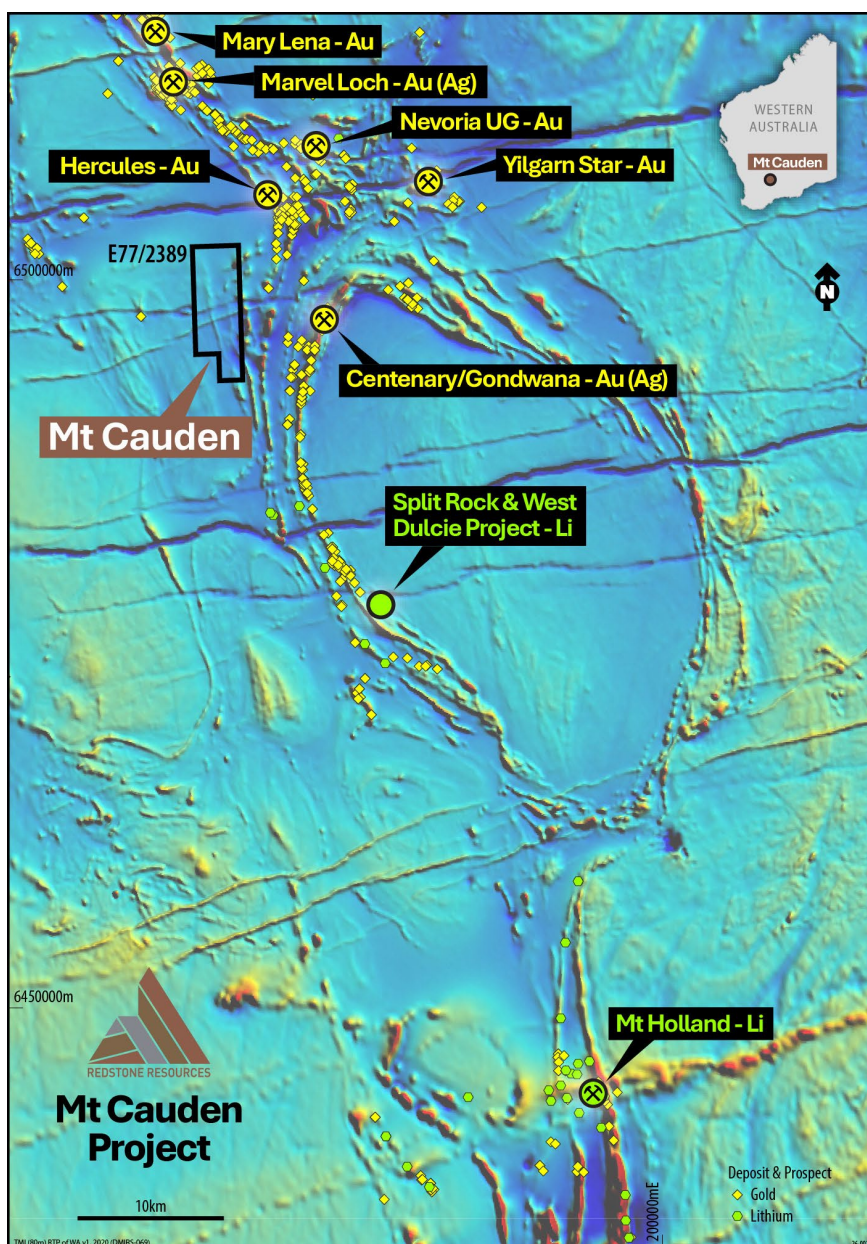


Figure 2 – Location of the Mt Cauden Au-Li Project overlaying regional magnetics and highlighting the proximity to the major gold deposits and the Mt Holland Li mine.



Historical Au exploration in the area has concentrated on magnetic greenstones in the eastern side of the Youanmi Terrane - leaving the magnetic greenstones and metasediments in the west of the terrane, such as those running through the Mt Cauden Project, significantly underexplored.

Historical soil samples and limited shallow RAB and RC drilling over a small area of magnetic greenstone on the tenure intersected low grade but continuous Au mineralisation (up to 4m @ 1.37 g/t from 52m)⁵. The shallow holes drilled could potentially be the edge of the gold mineralising system and cross sections show that gold mineralisation remains open at depth. This highlights the prospectivity of the project for potential economic Au mineralisation along the magnetic greenstones that run the length of the tenure which is so far untested.

The entire Mt Cauden project tenure is also prospective for Li-bearing pegmatite. Nearby to the Mt Cauden Project, the Youanmi Terrane has been a major focus of Li exploration, with several successful discoveries, including the world class, Mt Holland Li Mine - 189Mt at 1.5% LiO₂ – being one of Australia's largest and highest grade hard rock Li resources. Mt Holland lies within the same greenstone belt, only 25km along strike to the SE of the Mt Cauden project. Additionally, the Split Rock and West Dulcie Li Prospects are situated approximately 5-10km along strike to the SE, and the Mt Palmer Li Project is situated 5km along strike to the NE of the Mt Cauden Project.

A Program of Works (PoW) has already been approved for a first pass RC drilling program on identified priority walk up Au drill targets.

Gold processing plants and mining infrastructure surround the project, enhancing the economic viability of any potential gold or lithium discovery.

Taking this into account, Redstone considers the Mt Cauden Project a compelling near-term exploration opportunity.

Twin Hills Project, Gold – Menzies Gold District, WA

The Twin Hills Gold Project comprises 60 km² of tenure covering highly prospective Norseman-Wiluna Greenstone geology with suitable gold bearing structures. The project is located in the world class, heavily gold endowed Leonora-Menzies mining centre near to existing mills and significant infrastructure (see **Figure 3**). Recently this has been one of the more exciting and active gold camps in WA, subject to significant M&A from both mid-cap gold producers and junior explorers.

Already, the very limited historical drilling to date at Twin Hills has identified gold mineralisation in a favourable structure including significant thick gold intersections of up to **17m @ 1.23 g/t Au from 28m** downhole⁶, which remain open at depth.

There has been limited modern exploration or target generative work conducted on the project to date, presenting an opportunity for renewed exploration focus and for potential gold discovery to be made.

Redstone has an approved PoW to undertake first phase gold exploration drilling on the project.

⁵ 1996/97 RC drilling in Warne, 2001, Annual Technical Report, WAMEX A63569

⁶ 1998 RAB drilling in Hewlett, 1999, Annual Technical Report, WAMEX A58153

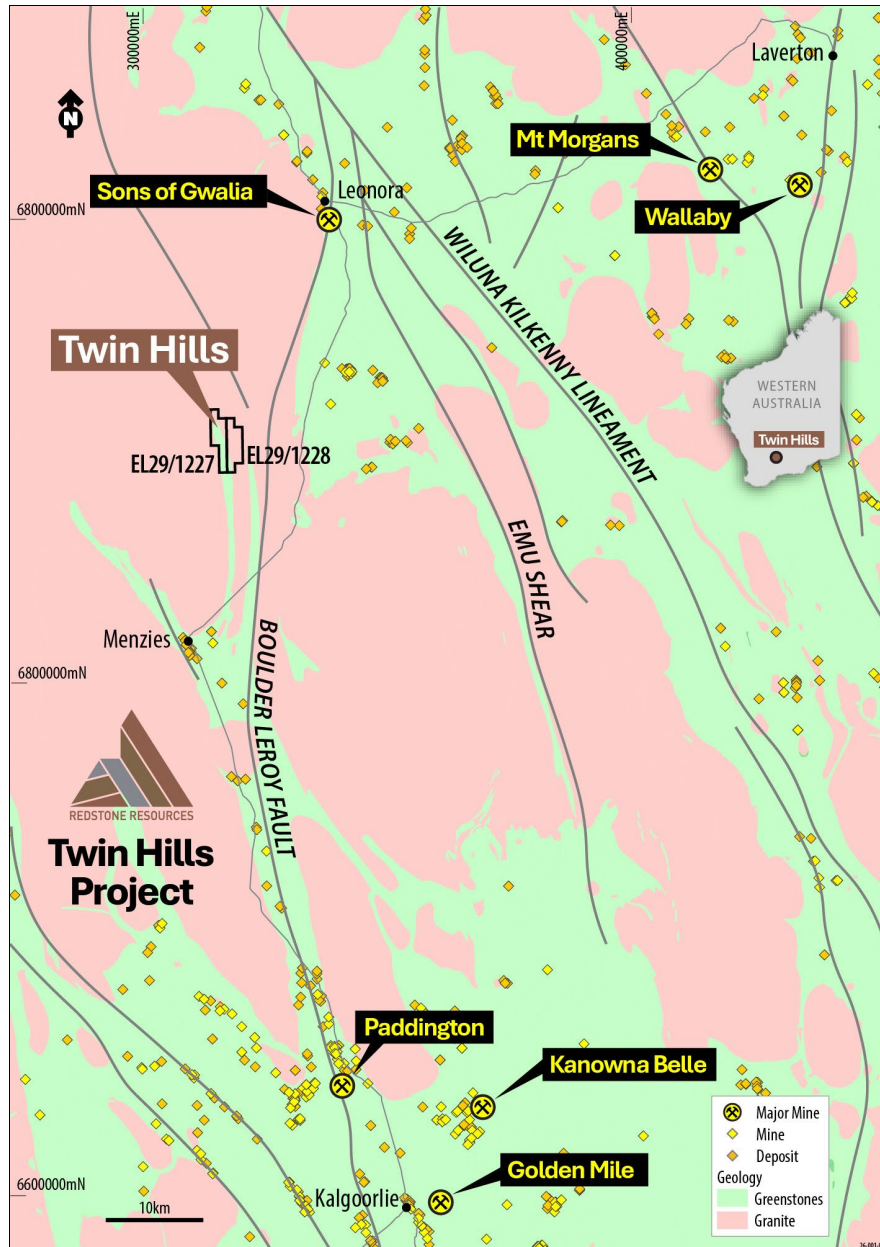


Figure 3 – Location of the Twin Hills Gold Project and surrounding geology and gold mines and deposits.

Rudall East, Mt Isa style Cu-Au and Base Metals Project - East Pilbara, WA

The Rudall East Project comprises 58 km² of granted tenure in the Paterson terrane, East Pilbara directly south of the Karlamilyi National Park (see **Figure 4**). The project is prospective for Mt Isa-Rammelsberg style Cu-Pb-Zn-Ag SEDEX and related Gold in a geological setting that shows good potential for all three proposed models for the formation of the Mt Isa SEDEX deposit in Queensland, one of the world's largest concentrations of Cu, Pb and Zn. SEDEX deposits are also capable of producing large amounts of gold such as the Rammelsberg SEDEX deposit in Germany, which has produced as much as 30Mt at 1g/t Au and has been mined opportunistically for over 1000 years.



Just 7km to the east of the project tenure, in the same geology, limited historical drilling uncovered a thick SEDEX like sulphide zone with up to 35% sulphide – with 1m intersections of Cu (0.78%) and Au (8.6g/t) between thick zones (up to 28m) of low grade Pb and Zn (the Maxwell prospect)⁷.

This highly prospective project has two Tempest EM anomalies identified in a Geoscience Australia 2009 survey⁷, one proximal to a Cu bearing gossan, which are both yet to be tested (see **Figure 4**). Additionally, a third, much larger area of conductive basement in the south, which has also not yet been adequately tested, coincides with very limited historical drilling results from the early 1980's. These include historical intersects of up to **1.8% Cu, 1.6% Pb, 1.1% Zn and 27 g/t Ag**⁷ (1980's). Surface rock chip sampling over the same area has recovered oxidized mineralisation with up to **22.9% Cu and 661 g/t Ag**⁷.

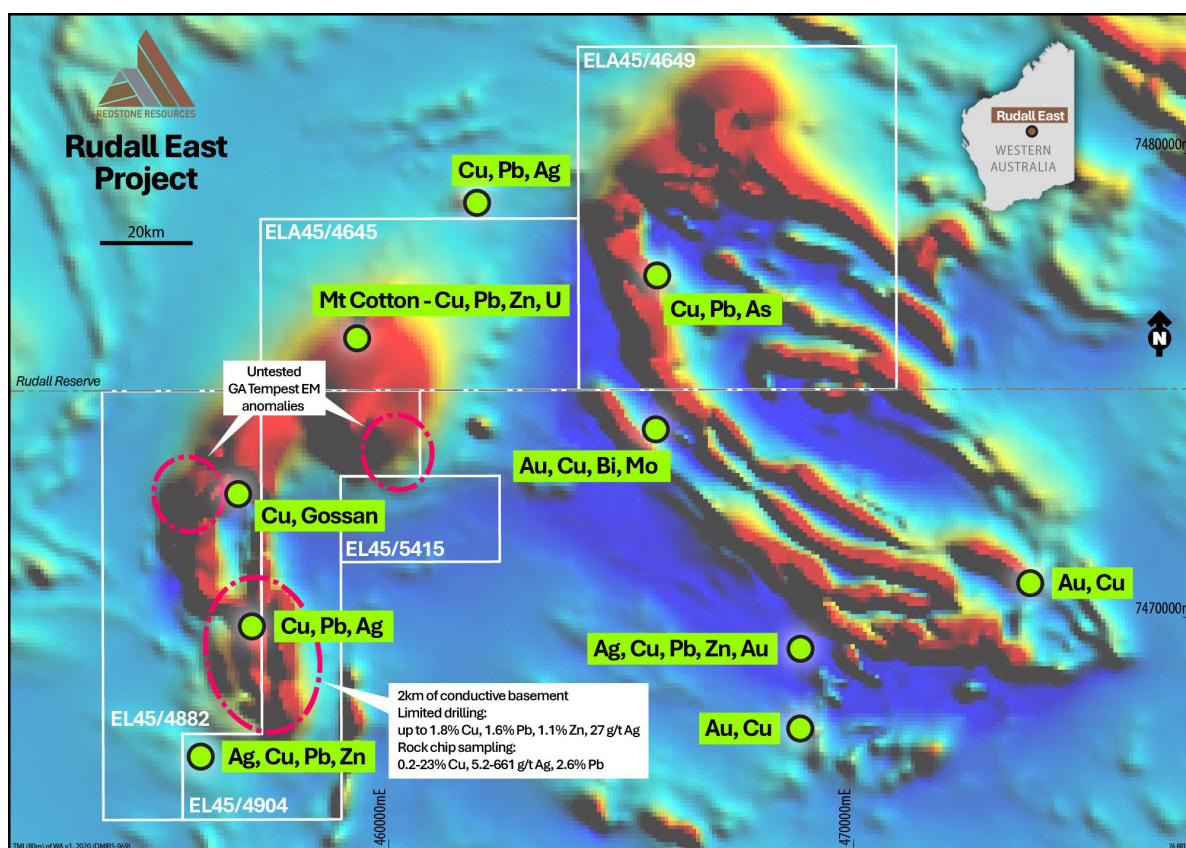


Figure 4 – Location of the Mt Isa style Cu-Au Rudall East Project highlighting the untested EM targets and location of highly anomalous (Cu, Pb, Zn Ag) surface samples over publicly available regional magnetics.

Redstone proposes to initially undertake reconnaissance rock chip sampling and soil sampling over targeted areas of the project such as the EM anomalies.

Cockatoo Rocks, LCT Pegmatite Project - NE of Kalgoorlie, WA

The Cockatoo Rocks Project is a greenfields lithium (Li) pegmatite project located 100km NE of Kalgoorlie within the Jubilee Terrane and Gindalbie Terrane. The boundary of the two terranes is marked by the large regional NNW-SSE trending Emu Fault, which runs directly through the Project (see **Figure 5**). Within the Project, government airborne magnetics and some limited historical drilling indicate the presence of ultramafic units which strike parallel to the Emu Fault allowing for the geological interpretation of the tenure to be a faulted greenstone sequence sandwiched between two granitoids, a geological scenario that is highly conducive to Lithium Cesium Tantalum (LCT) pegmatites in the Yilgarn (see **Figure 5**).

⁷ Rust, 2016, Annual Technical Report, WAMEX A109169



Historic exploration efforts were solely focused on shallow Nickel laterite mineralisation, with no regard to LCT pegmatite prospectivity, however upon re-investigation the historical drill logs had identified thick shallow pegmatite intercepts (up to 50m thick and within 10m from surface) logged in historical RC holes. The intersections also suggest the pegmatite units are shallow dipping to flat lying. Limited composite re-sampling of highly oxidized pegmatite drill spoil shows anomalous geochemical LCT pegmatite signatures, including lithium (Li_2O) values of up to 300ppm, cesium values of up to 321ppm and very low Mg/Li ratios⁸ indicating a high degree of fractionation of the pegmatite towards potential LCT pegmatite mineralisation.

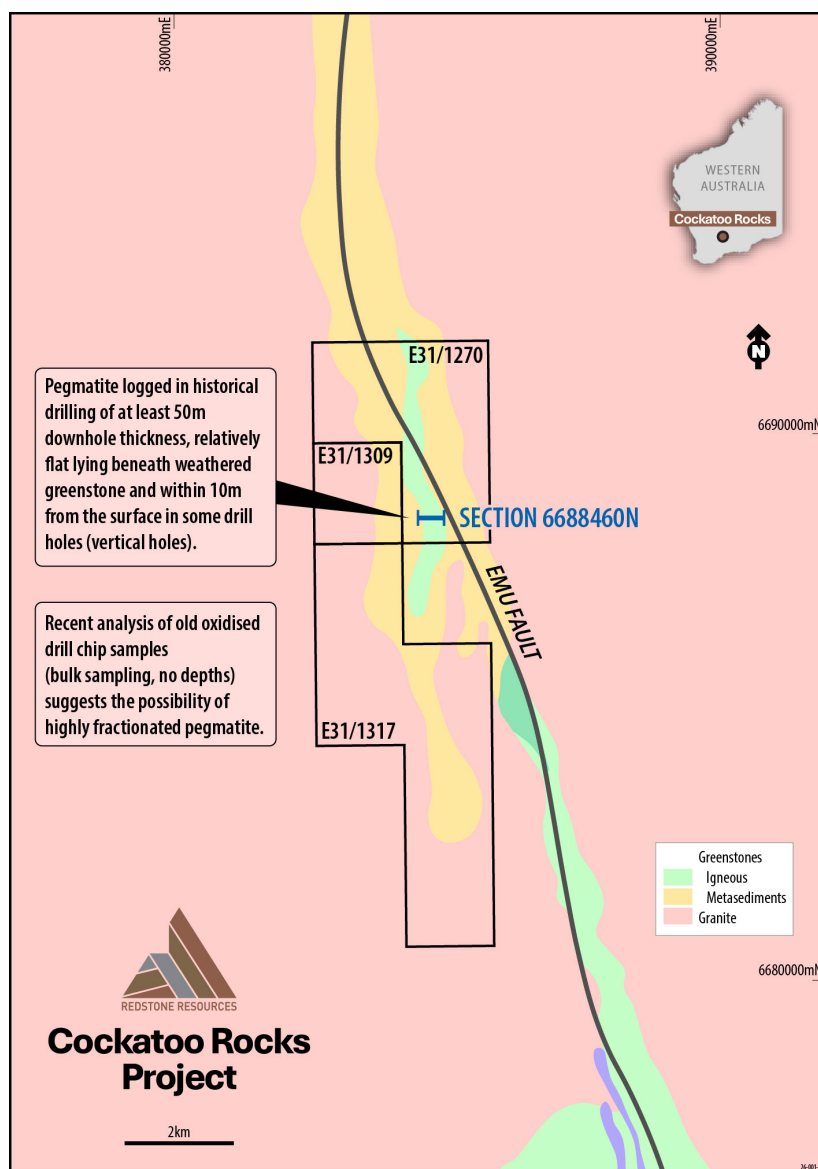


Figure 5 – Location of the Cockatoo Rocks Lithium Project and surrounding prospective geology.

The presence of shallow dipping to flat lying pegmatite units within a sequence of mafic and ultramafic greenstone rocks, within the vicinity of a major regional fault system, and with highly oxidized historical bulk drill spoil showing LCT pegmatite signatures suggests to Redstone that the Cockatoo Rocks Project has high potential for multiple stacked, relatively flat lying LCT pegmatites.

Redstone proposes to undertake an extensive shallow aircore drilling program in the future to penetrate through the greenstone into the shallow pegmatite.

⁸ Shirtliff, 2024 Annual Technical Reports, WAMEX A143277, A143278



Additional Highly Prospective Projects

Anthiby Well Project, Gold – Ashburton, WA

The Anthiby Well Gold Project is located some 100km WNW of Paraburdoo, just outside the Pilbara in the Ashburton Mineral Field. The project is only 50km from the Paulsens Gold Mine, which produced over 930,000 oz of gold over its 13 years of production from 2004-5 to 2017-18; that is currently in care and maintenance (see **Figure 6**).

The project was last explored in 2004 by a Newcrest Mining joint venture, where drilling discovered very shallow and some deeper gold mineralisation with drilling intersects of up to **4m @ 5.23g/t from only 7m** downhole and **9m @ 2.8g/t from 138m**⁹. The deeper drilling was very limited and with the very low prevailing gold prices of that particular era, explorers seemed to have walked away with no understanding of the controls on mineralisation.

Redstone considers that a review of the tenure to better understand the geological and structural controls on the gold mineralisation, combined with modern exploration methods, could potentially unlock an economic gold deposit, especially considering the lack of drilling at greater depths.

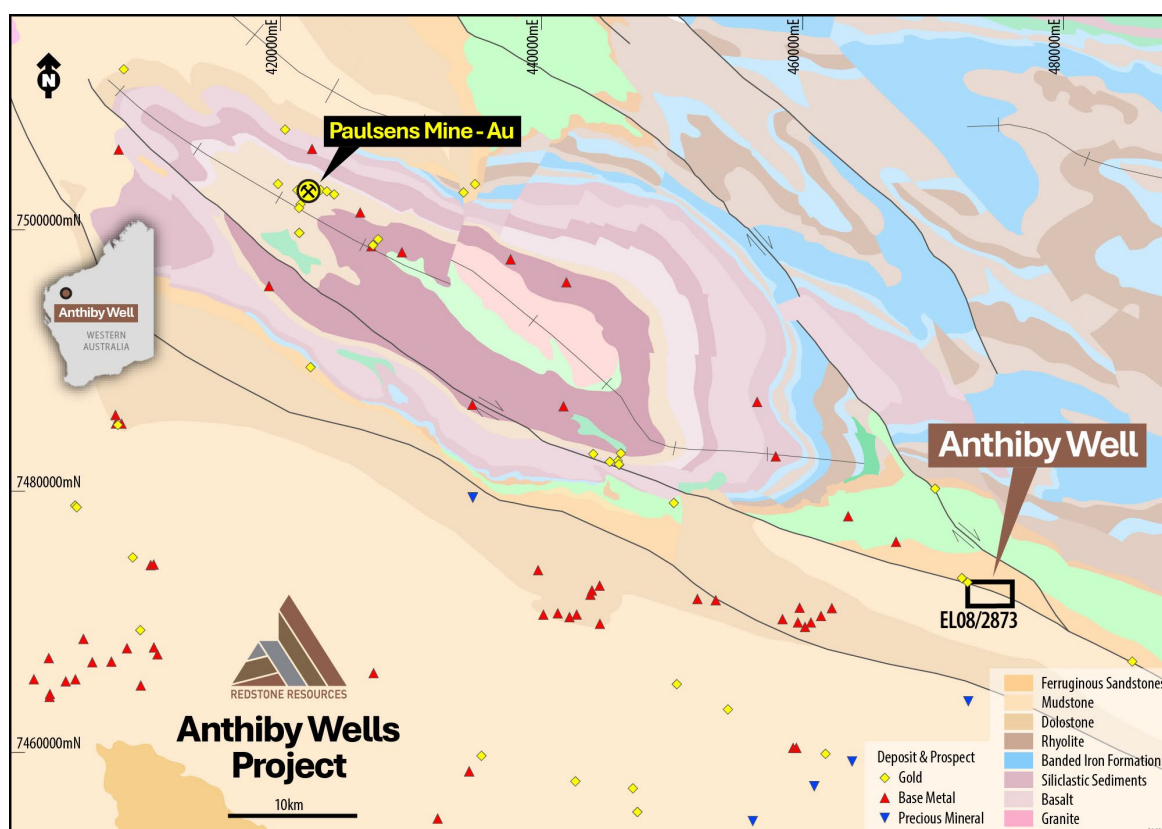


Figure 6 – Location of the Anthiby Wells Gold Project and surrounding prospective geology relative to the Paulsens Gold mine.

⁹ Newcrest Mining Ltd, 2004, Annual Technical Report, WAMEX A070232



Gascoyne Creek Project, Cu-Au – Gascoyne, WA

The Gascoyne Creek Project covers a 3.5km long untested EM anomaly near Gascoyne Creek in the Gascoyne of WA. The anomaly follows a large regional structure that runs through the property along a granite contact. Rock chip sampling undertaken, adjacent to the historically mapped Dead Man Fault structure within the property, has returned highly anomalous Cu, Au, REEs and gold pathfinders¹⁰. The project is surrounded by significant Cu-Au and Au prospects throughout the region, including within limited historical drilling to the north of the project (see **Figure 7**).

Redstone considers the EM anomaly and regional structure running through the Project to be an obvious area of interest for exploration and will commence further surface exploration and potential geophysics to identify targets for drilling.

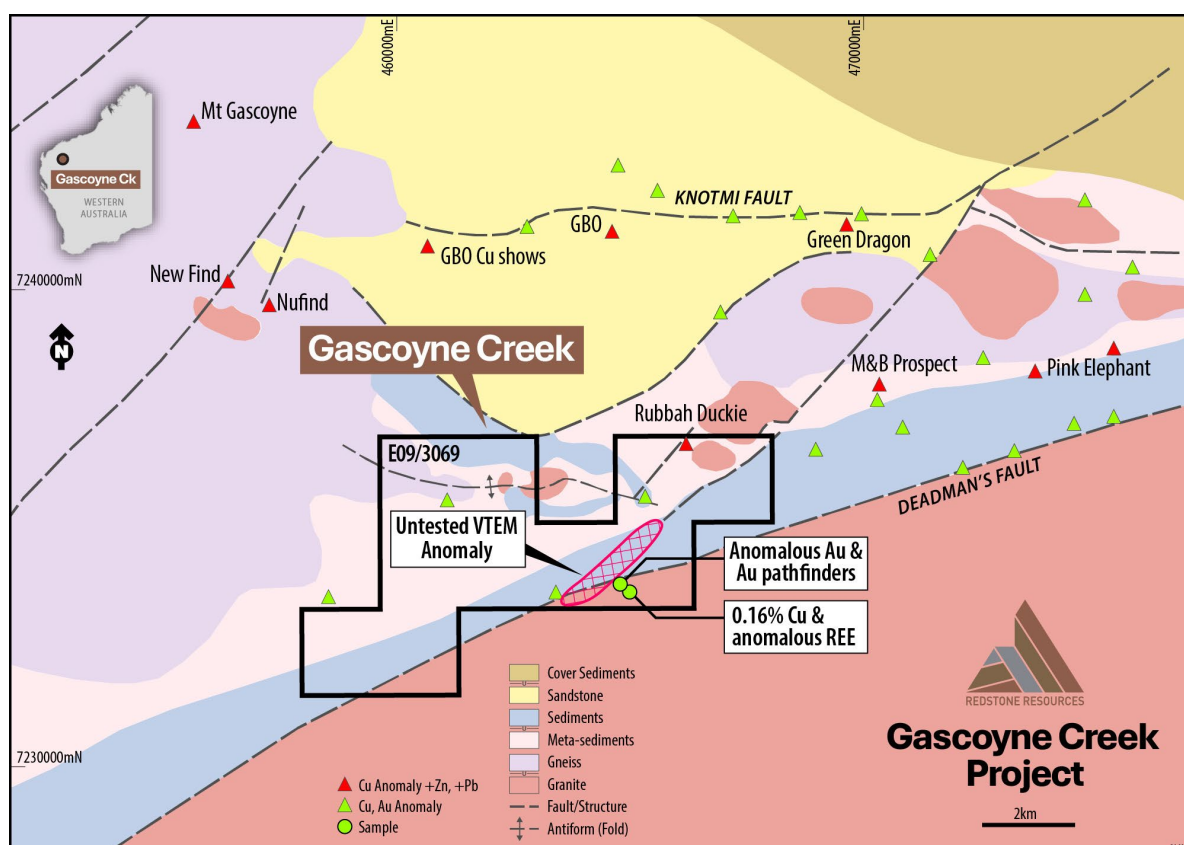


Figure 7 – Location of the Gascoyne Creek Cu-Au-Pb-Zn-Ag Project and surrounding prospective geology relative to other Cu-Au prospects.

The Little Bulong Project, Nickel, Gold - Eastern Goldfields, WA

The Little Bulong Project is a Ni laterite Project that is part of the larger Bulong Ni laterite deposit near Kalgoorlie in WA. The project contains up to 50,000t of contained Ni metal and 3,000t of Co metal¹¹. A processing technique that could potentially extract the Ni and Co economically will be evaluated.

Although predominantly a Ni project, Redstone also considers that the Little Bulong is prospective for gold and therefore needs to be further investigated in this regard.

¹⁰ Shirliff, 2022, Annual Technical Report, WAMEX A132836

¹¹ Shirliff, 2023, Annual Technical Report WAMEX A136202



Next Steps: Exploration Plans

Redstone's exploration programs will initially focus on the two priority gold projects, Mt Cauden and Twin Hills, for which the vendor has obtained approved PoW.

Importantly, having already secured the PoW Redstone can quickly undertake an initial phase of exploration RC drilling to test the identified walk-up drill targets. Further information on these programs will be available in due course.

Redstone will also begin geological reconnaissance, and where necessary communications with traditional owners regarding program access, on the other acquired projects.

MATERIAL AGREEMENT TERMS

The material terms of the Agreement include:

- Upon signing the Agreement Redstone will issue 75 million fully paid ordinary shares in the capital of the Company (**Shares**) to the Vendor, Hurricane Prospecting Pty Ltd (**Hurricane**), at a deemed issue price of \$0.003 per Share, being a total consideration of \$225,000, to acquire a 100% interest in each of the Acquired Projects.
- Upon issue of the Shares, Hurricane will enter into an escrow agreement in respect of 100% of the Shares for a period of twelve (12) months from the date of issue.
- The consideration also includes a 1.5% Net Smelter Return (**NSR**) over all the Acquired Projects.

The Agreement is subject to customary terms and conditions.

-ENDS-

This Announcement has been approved for release by the Board of Redstone Resources Limited.

For further information please contact:

Richard Homsany
Chairman
Redstone Resources Limited
+61 8 9328 2552
contact@redstone.com.au

Miranda Conti
Company Secretary
Redstone Resources Limited
+61 8 9328 2552
contact@redstone.com.au

Media and Investors: Sam Burns at Six Degrees Investor Relations +61 400 164 067



ABOUT REDSTONE RESOURCES:

Redstone Resources Limited (ASX: RDS) is a base, precious metals and a lithium company exploring its gold and critical minerals portfolio located in Western Australia and lithium project in James Bay, Quebec in Canada.

Redstone's current priority focus includes the 100% owned prospective West Musgrave Project, which includes the Tollu Copper deposit. The West Musgrave Project is located between BHP's Nebo Babel Deposit and Nico Resources' Wingellina Ni-Co project.

In addition, the Company has acquired a suite of highly prospective Greenfields exploration projects in WA considered highly prospective for gold, lithium, copper and Mt Isa style copper-gold and base metals. The current priority focus within this newly acquired portfolio includes the Mt Cauden and Twin Hills Gold Projects respectively.

Redstone continues to evaluate the HanTails Gold Project at Kalgoorlie, Western Australia for potential development in the future. Redstone also has a 50/50 JV with Galan Lithium for lithium projects, located in James Bay, Québec, Canada (the James Bay Lithium Projects).

Competent Persons Statement

Acquired Projects, Western Australia

The information in this document that relates to exploration results for the Acquired Projects was authorised by Dr Greg Shirtliff, who is employed as a consultant to the company through Zephyr Professional Pty Ltd. Dr Shirtliff is a Member of the Australian Institute of Mining and Metallurgy and has sufficient experience of relevance to the tasks with which he is employed to qualify as a Competent Person as defined in the 2012 Edition of the 'Australasian Code for Reporting of Exploration Results, Mineral Resources and Ore Reserves'. Dr Shirtliff consents to the inclusion in the report of matters based on information in the form and context in which it appears.

Forward-Looking Statements

This document may include forward-looking statements. Forward-looking statements include, but are not limited to statements concerning Redstone Resources Limited's (**Redstone**) planned exploration program and other statements that are not historical facts. When used in this document, the words such as "could", "plan", "estimate", "expect", "intend", "may", "potential", "should", and similar expressions are forward-looking statements. Although Redstone believes that its expectations reflected in these forward-looking statements are reasonable, such statements involve risks and uncertainties and no assurance can be given that actual results will be consistent with these forward-looking statements.



APPENDIX 1 - Acquired Projects Tenement Schedule

Project	Tenement	Registered Holder Applicant*	Holder Interest	Consolidated Entity Interest	Grant Date/(Application Date)	Expiry	Blocks	Area km2
Mt Cauden	E 77/2389	Hurricane	0%	100%	16/02/2017	15/02/2027	9	27.7
Twin Hills	E 29/1227	Hurricane	0%	100%	28/09/2023	27/09/2028	10	30.8
Twin Hills	E 29/1228	Hurricane	0%	100%	28/09/2023	27/09/2028	10	30.8
Cockatoo Rocks	E 31/1270	Hurricane	0%	100%	18/10/2022	17/10/2027	3	9.2
Cockatoo Rocks	E 31/1309	Hurricane	0%	100%	8/12/2022	7/12/2027	1	3.1
Cockatoo Rocks	E 31/1317	Hurricane	0%	100%	1/09/2023	31/08/2028	5	15.4
Rudall East	E 45/4882	Hurricane	0%	100%	9/11/2018	8/11/2028	9	27.7
Rudall East	E 45/4904	Hurricane	0%	100%	9/11/2018	8/11/2028	7	21.6
Rudall East	E 45/5415	Hurricane	0%	100%	16/09/2020	15/09/2030	2	6.2
Rudall East	E 45/4645	Hurricane	0%	100%	(2/11/2025)	N/A	8	24.7
Rudall East	E 45/4649	Hurricane	0%	100%	(5/11/2015)	N/A	16	49.3
Rudall West	E 45/4659	Hurricane	0%	100%	(8/12/2015)	N/A	6	18.5
Rudall West	E 45/4712	Hurricane	0%	100%	(2/03/2016)	N/A	70	215.8
Anthiby Well	E 08/2873	Hurricane	0%	100%	4/04/2018	3/04/2028	2	6.2
Little Bulong	E 25/552	Hurricane	0%	100%	24/04/2017	23/04/2027	1	3.1
Gascoyne Creek	E 09/3069	Hurricane	0%	100%	(22/05/2026)	N/A	10	30.8

* The current registered holder of the Acquired Projects is Hurricane Prospecting Pty Ltd (Hurricane). Transfers of title are pending.